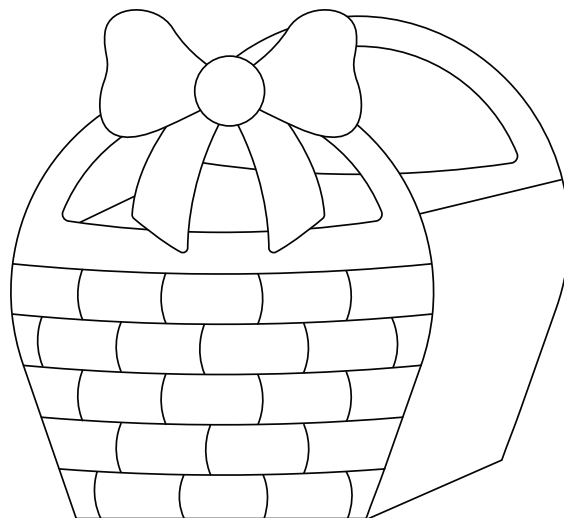
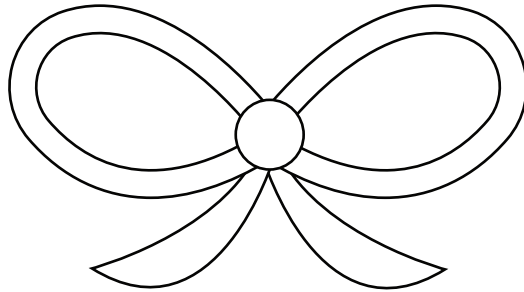
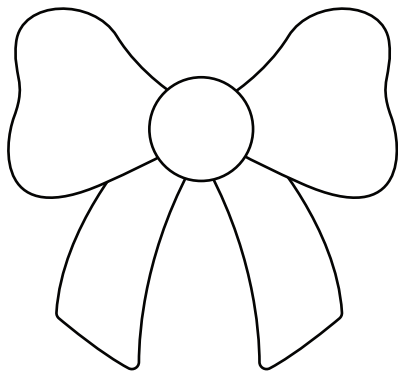


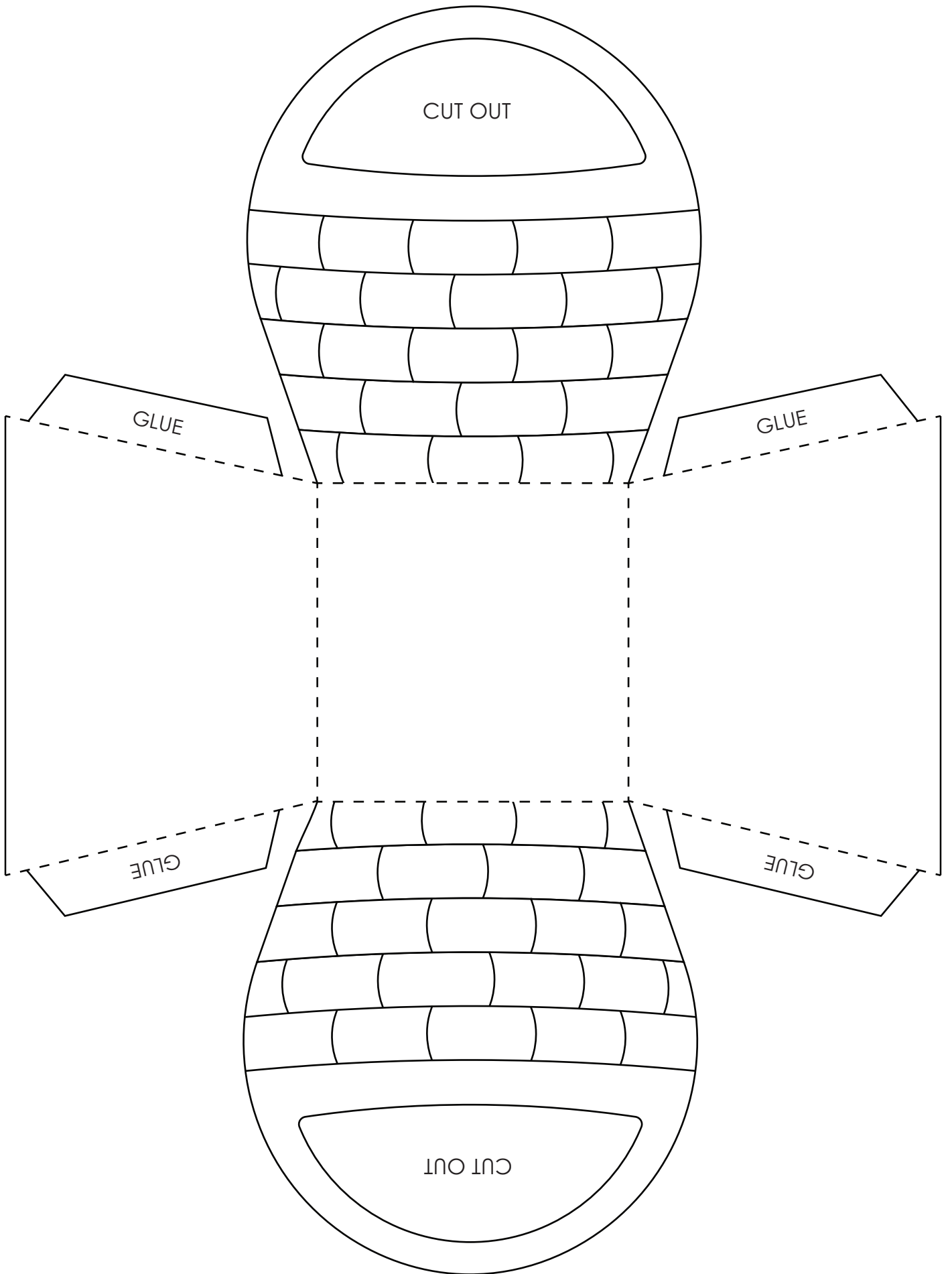
# EASTER BASKET CRAFT

1. Color and cut out the basket.
2. Fold along the dotted lines so the basket weave is facing out.
3. Fold the tabs and glue inside their adjacent sides.

\*Optional: Choose a bow to color and put on the basket.



Finished product example



CUT OUT

GLUE

GLUE

GLUE

GLUE

CUT OUT