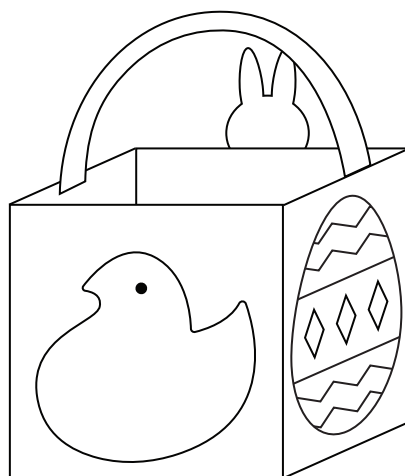


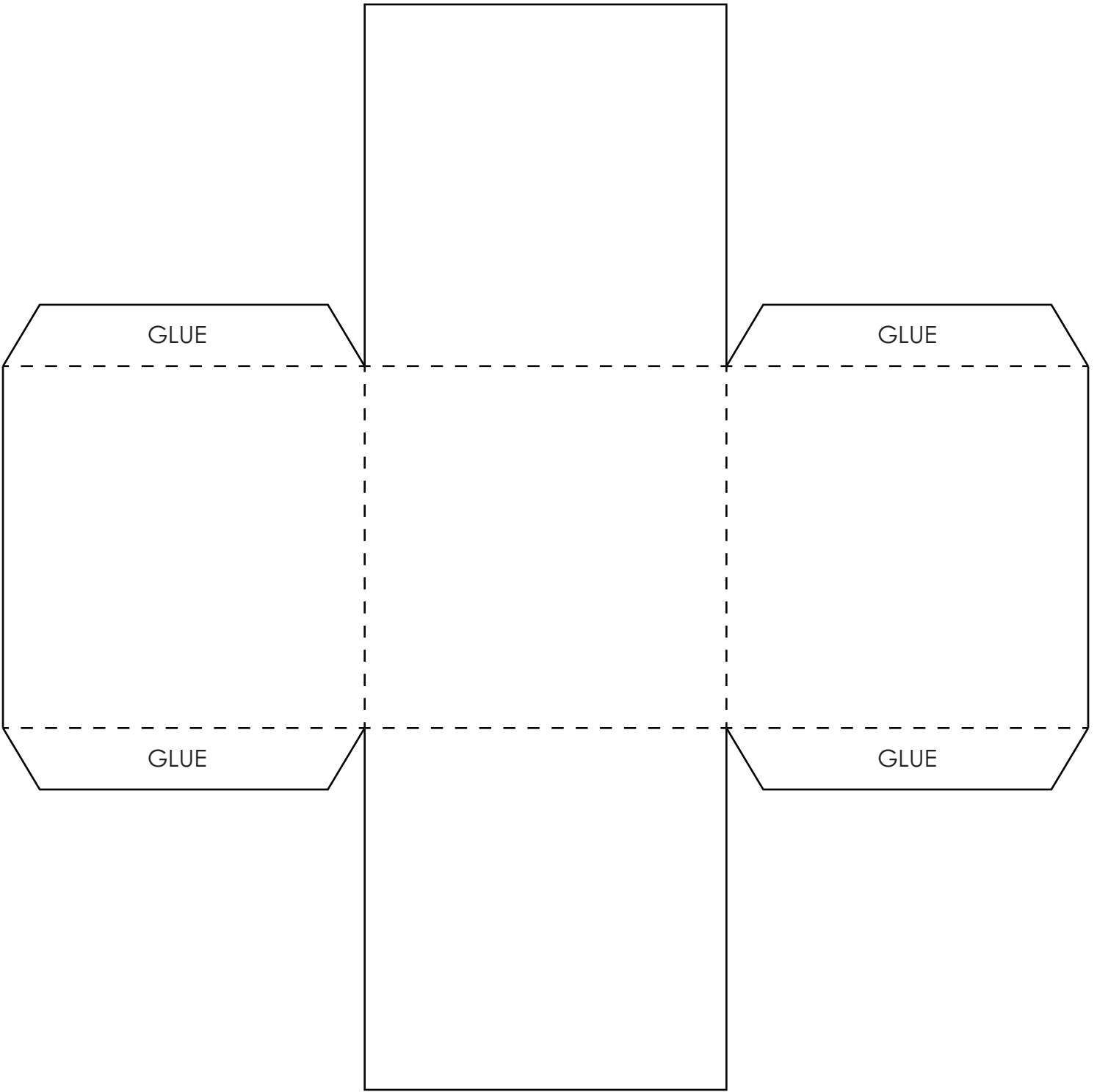
Easter Basket Craft

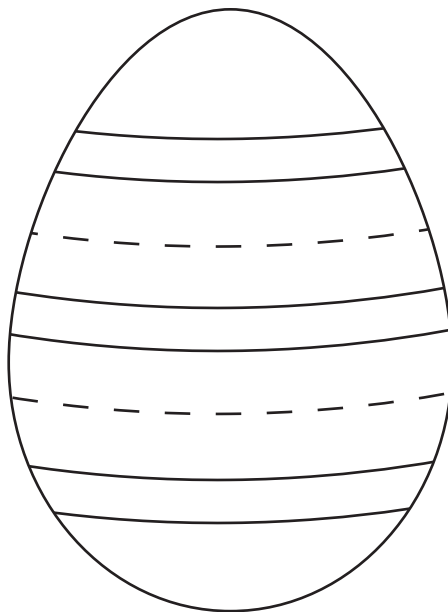
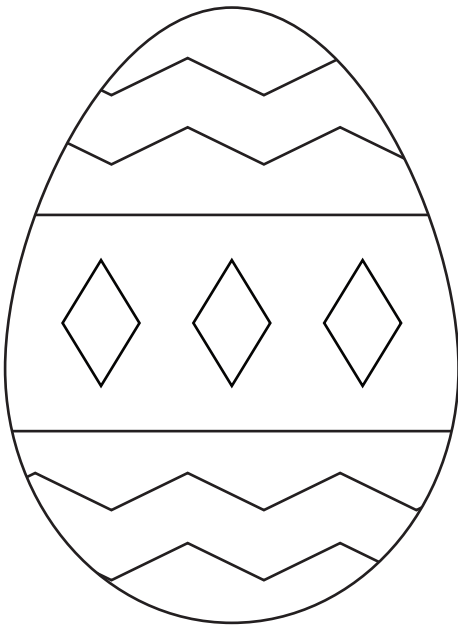
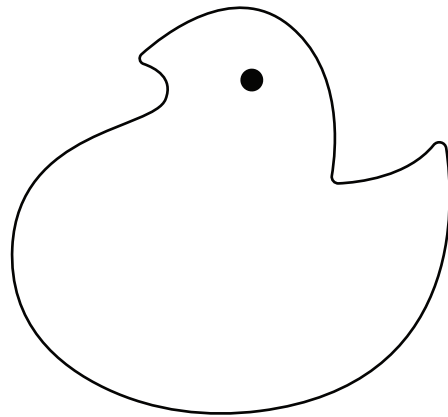
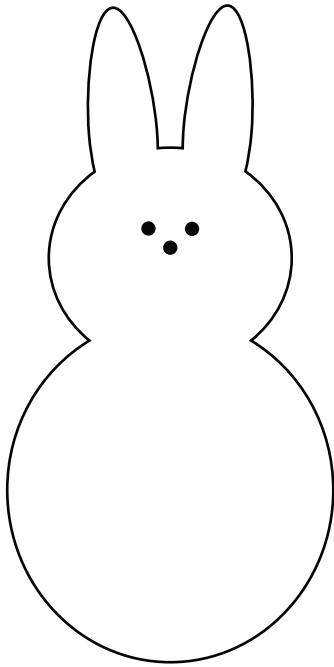
1. Color and cut out each basket piece.
2. Fold inwards along the dotted lines.
3. Glue the side tabs to the inside of their adjacent box sides.
4. Glue the handle tabs to the inside of the box.
5. Glue an Easter treat to each side of the box.

*Optional: Fill your basket with Easter grass and your favorite candy!



Finished product





GLUE

GLUE