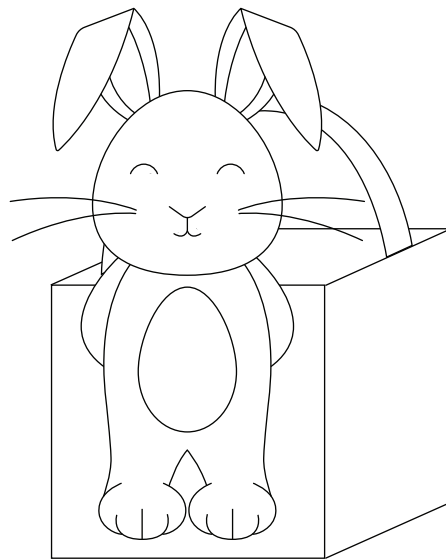


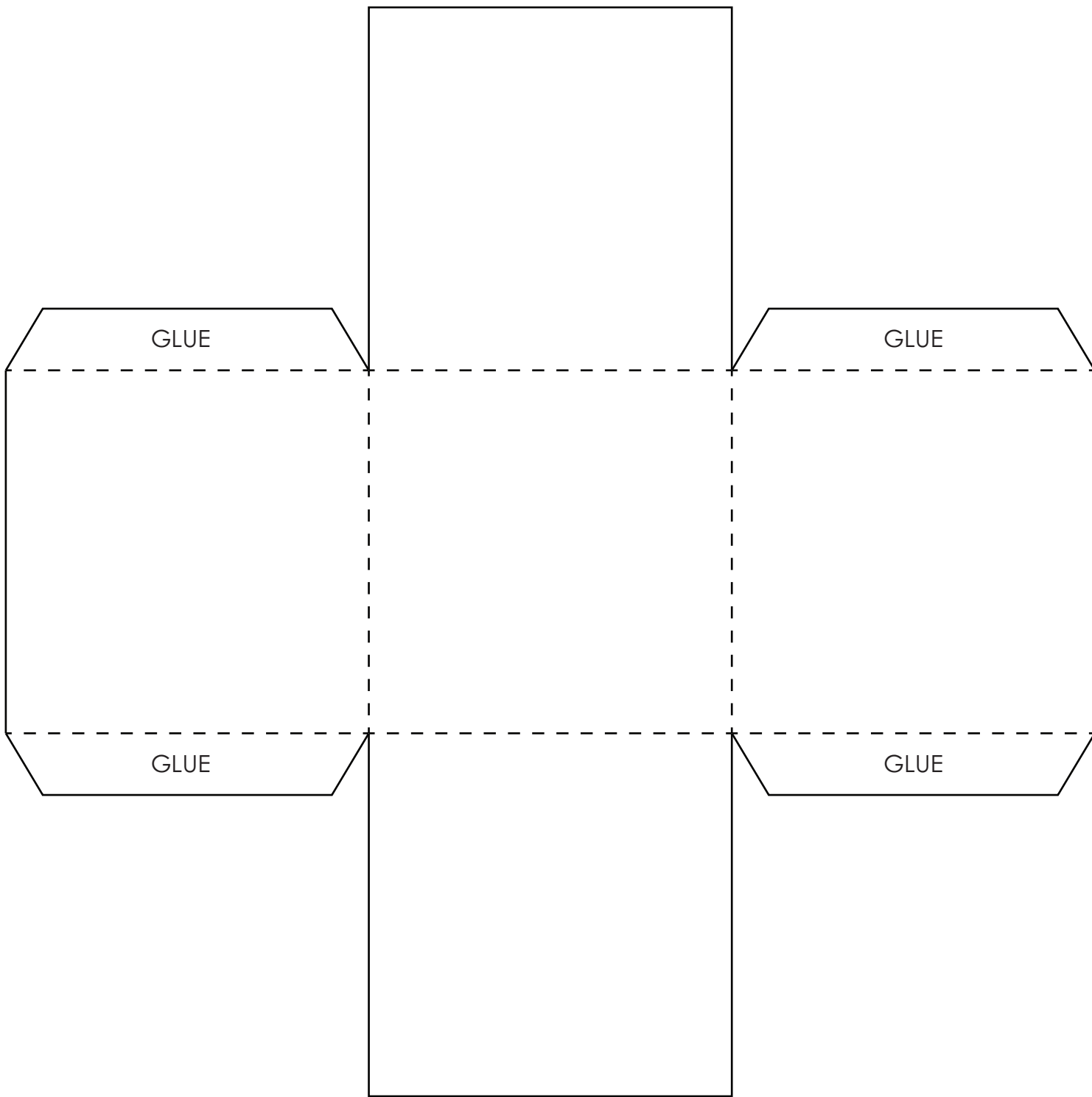
# EASTER BUNNY BASKET CRAFT

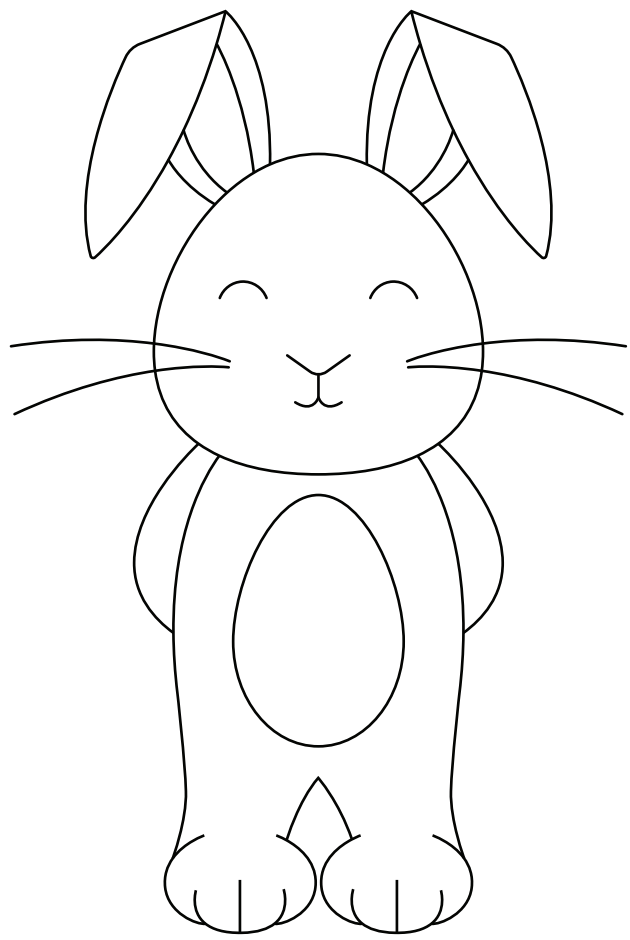
1. Color and cut out each basket piece.
2. Fold inwards along the dotted lines.
3. Glue the side tabs to the inside of their adjacent box sides.
4. Glue the handle tabs to the inside of the box.
5. Glue the bunny to the front of the box.

\*Optional: Fill your basket with Easter grass and your favorite candy!



Finished product





GLUE

GLUE